

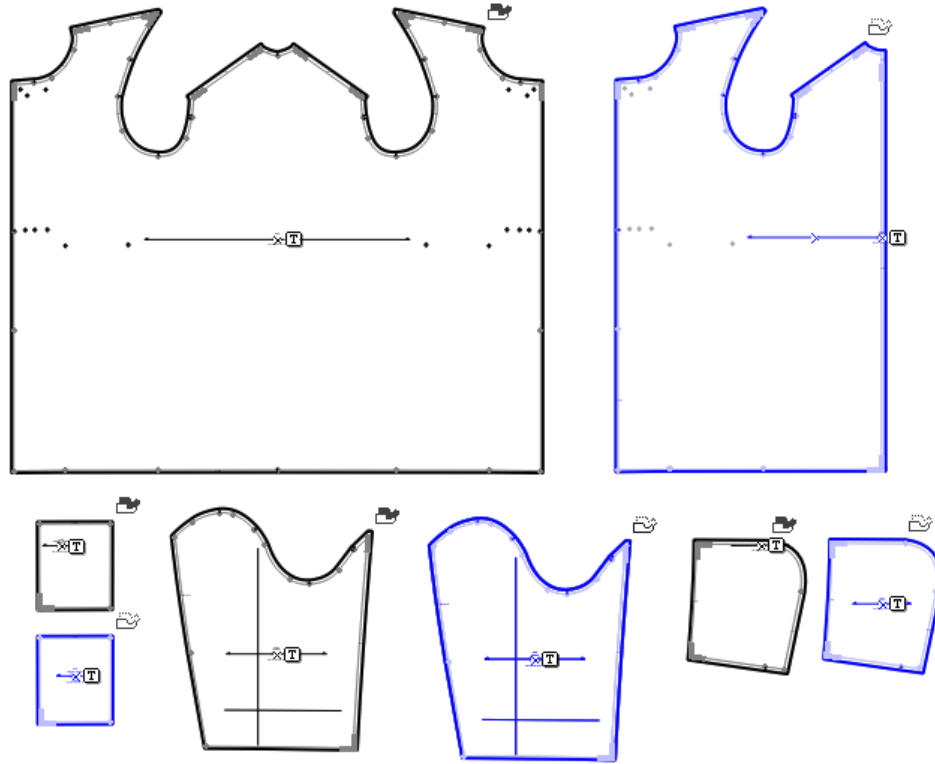


The Blanket Coat Project: A Sewing Guide

Table of Contents:

The Pieces -3
Pockets - 4
Coat Body - 9
Sleeves - 12
Hood - 14
Setting the Sleeves - 19
Setting the Hood - 22
Belt - 24
Coat Complete! - 26

The Pieces



The Pieces, clockwise from top left:

Body in self single, Body in lining pair, Hood in lining pair,
hood in self pair, sleeve in lining pair, sleeve in self pair,
pocket in lining pair, pocket in self pair (missing from im-
age belt in self pair)

Pockets



Place pocket self and pocket linings right sides together



Stitch around 1/4 inch leaving one short side open



Clip the corners



Press open seams



Turn out and use a pointed object to push out corners and press



Fold back top, or unstitched edge by 1 inch and press



Trim back lining



Edge stitch at 1/4 and top stitch at 3/4



Line the top of the pocket up with drill holes on coat body self fabric

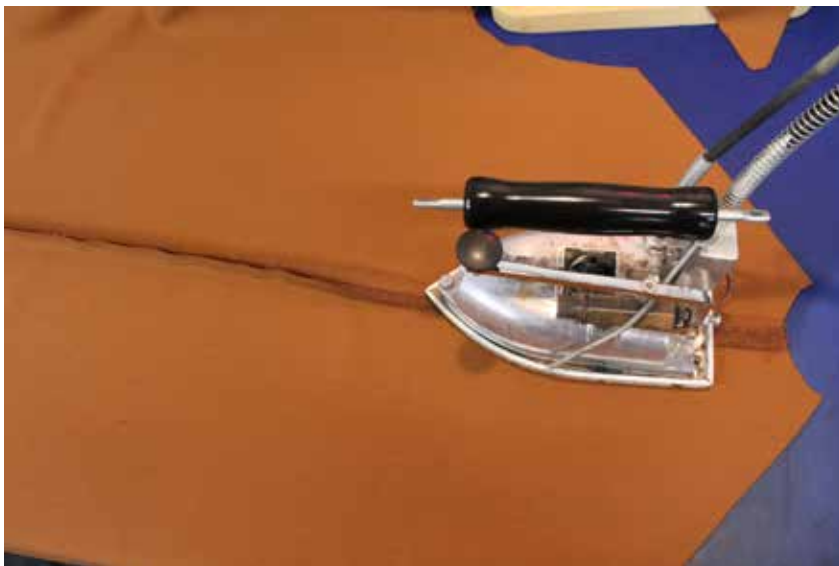


Edge stitch and top stitch at 1/4.
Tack top corners of pocket well
Press

Coat Body



Sew center back lining at 1/2 inch



Press open



Place coat body lining and self right sides together.

Starting from the notch on the neckline sew 1/4 inch around coat front.

Continue to sew at 1/4 inch around hem and back up to the notch on the other side of the neckline





Press open all around



Turn out and press flat



Starting at notch on neckline topstitch at 3/4 inch



Continue all around the coat to the other neckline notch



Add two additional rows of topstitching to the hem 1/4 inch above and 1/4 inch below



Serge self and lining together at remaining raw edges and press well.

Sleeves



Place sleeve self and lining right sides together and sew across hem at 1/4



Press hem open



Press hem back, rolling the self slightly to the lining side



Top stitch hem at 3/4



Serge remaining raw edges of self and lining together and press well

Hood



Find the neck notch on hood linings. The center back seam is opposite this. Place hood linings right sides together and sew Center back seam at 1/2



Do the same for hood self



Press hood centre back seams open



Place hood lining and self right sides together and sew 1/4 inch at centre front or hood opening. (note this will be the remaining seam that is not notched)



Hood shown with self and lining
sewn together at CF seam



Press open centre front seam on hood



Press hood centre front Seam flat



Top Stitch hood centre front at 3/4



Serge lining and self hood neckline together and press well.

Setting the Sleeves



The sleeve should be set with right sides together. The back of the sleeve has a long point should be towards the back shoulder.



Sew the armhole at 1/2 inch, easing at the crown of the sleeve if necessary.



Press open armhole.



Fold the sleeve and body right sides together to access the back seam of the sleeve and the shoulder.



Sew the sleeve back seam and shoulder seam together at 1/2 inch



Press open

Setting the Hood



Place hood and body necklines right sides together



Sew neckline at 1/2 inch



Press all seam allowances down into the body of the coat.

From the lining side, topstitch all neckline seam allowances at 1/4 inch



The neckline shown topstitched from the right side.

Belt



Sew one short end of belt together at 1/2 inch



Serge both long side of belt



Fold back long sides of belt and stitch at 1/2 inch



Press Well



The coat is complete!

Thank you for your support.

Please check it over and press it well.

Once returned to us we will put in buttons and button holes before distributing